



Theme: Investing in Possibility

This term, our theme *“Investing in Possibility”* reflects our commitment to ensuring every child receives an education that prepares them not only for today, but empowers them to shape the world of tomorrow.

Across our partnership, we have continued to **invest time and expertise into strengthening our curriculum** so that our children have rich opportunities to lead, make meaningful choices in their learning and access experiences that take them far beyond the classroom. These opportunities help them grow as confident, curious and responsible citizens of the future.

A key part of this **investment is our commitment to our pupils with special educational needs and disabilities**. We are directing additional SEND funding to ensure that these learners receive the personalised support they need to thrive, achieve and fully participate in school life.

We are also **investing in high-quality continuing professional development for our staff**. This includes dedicated time for face-to-face and online training, opportunities for school-to-school visits and regular forums for leaders to network, share exceptional practice and design innovative plans for future development.

In addition, we are making **significant financial investment in cyber security** as we transition all our schools to secure cloud-based systems. Supported by our partners at EvolveIT, this work is strengthening our digital infrastructure, increasing resilience and ensuring our data and systems are protected for the future.

We are also proud to be **investing in the continued growth of our central team**. This includes further developing the role of our Operations Manager, Mrs Lucy Siddorn, appointing a full-time digital marketing apprentice, and continuing to deploy our extremely talented CFLP Lead Practitioners not only within our own schools, but also across Staffordshire.

I am incredibly grateful to our staff, families and children for the passion and positivity they bring to our schools every day. Together, we are building strong foundations and investing in the future of every child in our care.

Wishing you all a wonderful break.

A. Rourke
Chief Executive Officer
Children First Learning Partnership

Contents

Investment in the Future	2
Knypersley First School	3
Kingsfield First School	3
Oxhey First School	4
Reginald Mitchell School	4
Castlechurch Primary	5
Springhead Primary	5
Marfields Primary	6
Attendance Officer	6
Site Technician	6
Digital Marketing	
Apprentice	7
Lead Practitioners	7
News Gallery	8



Telephone: 01782 973810
Email:
centraloffice@cflptrust.co.uk

CFLP, Knypersley First School,
Newpool Road,
Knypersley, Stoke-on-Trent

ST8 6NN

Investment in the Future: Estates and ICT Development

The trust continues to look ahead and strengthen the foundations of our organisation, we are pleased to share exciting updates on our ongoing investment in Estates and ICT. These developments are designed to ensure our schools remain safe, efficient, and future-ready—supporting both high-quality learning and effective day-to-day operations.

Transition to Fully Cloud-Based Servers

Over the next academic year, the Children First Learning Partnership, working with our ICT partners Evolve, will be moving our systems to fully cloud-based servers.

This transition brings a number of benefits:

- **Greater reliability**, with significantly faster broadband
- **Improved access**, allowing staff to work more flexibly and securely
- **Enhanced disaster recovery**, ensuring our data is protected and recoverable
- **Future-proof infrastructure**, enabling us to adapt quickly to emerging technologies

This move represents a major step forward in modernising our digital environment and supporting more efficient working across all schools.

Strengthening Cyber Security

The safety of our systems, data, and users remains a top priority. As threats to digital security evolve, so must our defences. We are therefore investing in:

- Stronger monitoring and threat-prevention systems
- Ongoing training and support for staff to promote safe digital practice

These improvements will help ensure our systems remain resilient and secure, offering peace of mind for staff, pupils, and families.

Continued Investment Across School Sites

In addition to digital upgrades, we continue to prioritise the physical development of our school sites. Current and planned works include:

- Enhancements to classroom environments
- Improvements to outdoor areas and playgrounds
- Upgrades to lighting, heating, and general building infrastructure
- Ongoing maintenance to keep our schools safe, welcoming, and conducive to learning

These investments reflect our commitment to providing high-quality learning spaces where children can thrive.



KNYPERSLEY FIRST SCHOOL NEWS



At Knypersley First School, our pupil leadership teams play a central role in shaping the life and direction of our school.

We offer a range of leadership roles, each designed to provide a different development opportunity, ensuring every child can find a role that suits their strengths and helps them grow. Our children are true partners in school improvement: their voice is captured through fortnightly leadership meetings, with agendas set by the Headteacher, and through observations that highlight where change or refinement is needed.

Throughout their time at Knypersley, pupils have the chance to experience multiple leadership roles, enabling them to build personal skills, influence school decisions and contribute meaningfully to our community. Their leadership is not symbolic, it is active, valued and impactful.

Our School Council plays a key role in driving positive change. They meet regularly to reflect on school priorities, suggesting improvements such as adding adult-height waste bins to reduce litter. After listening to families, they selected two main charities to support, our PTFA and the British Heart Foundation and even received a special mention for their fundraising efforts. They also connect with our wider community by writing to local care homes and joining town hall discussions each half term. Their thoughtful leadership continues to shape our school in meaningful ways.

Knypersley First School,
Newpool Road,
Knypersley,
Stoke-on-Trent
ST8 6NN
knypersley.staffs.sch.uk



KINGSFIELD FIRST SCHOOL NEWS

Celebrating Our Kingsfield Playground Leaders

This term, we are delighted to celebrate the fantastic work of our Kingsfield Playground Leaders, who continue to make a positive and lasting impact on playtimes across our school. Our dedicated group of Playground Leaders, working closely alongside our brilliant Lunchtime Supervisors, recently took part in specialised training focused on leading physical activities, encouraging active play, and supporting younger pupils in developing teamwork, confidence, and social skills.

The training equipped the children with a range of practical strategies for organising games, resolving minor conflicts, and ensuring that every child feels included and engaged during lunchtime play. Their enthusiasm, maturity, and sense of responsibility have already shone through, and we are incredibly proud of how they have embraced their roles.

To further support active, enjoyable, and purposeful play, the school has invested in a wealth of new playground equipment. From sports kits and skipping ropes to creative play resources and team challenges, the new equipment has transformed our play spaces into vibrant hubs of fun and activity. The children have relished the opportunity to try new games, and the Playground Leaders have taken great pride in teaching their peers how to use the equipment safely and creatively.



Kingsfield First School,
Gunn Street,
Biddulph,
Stoke-on-Trent
ST8 6AY
kingsfield.staffs.sch.uk



Champions of Kindness & Wellbeing: Pupil Leadership in Action at Oxhey

Leadership is one of our Trust values, and at Oxhey we firmly believe that by nurturing leadership in everyone, including our children, we help them grow in confidence, develop important life skills and prepare them for life beyond school. This year, we introduced two brand new leadership roles; Helping Hands and Wellbeing Champions. Our 'Helping Hands' are a brilliant team of pupils who take pride in keeping our school tidy and running smoothly. They are polite, reliable and always ready to lend a hand with a smile! Our Wellbeing Champions work to raise and support children's wellbeing across our school. Having received a bespoke training programme from the Mental Health Support Team, these caring and responsible pupils help promote a positive, supportive atmosphere. Their role is to look out for the emotional wellbeing of others by offering a listening ear, encouraging kindness, and helping children feel included and valued. They are skilled in supporting friendship-building, they help resolve small worries through gentle conversation, and work with staff to create a safe and happy environment during playtimes and lunchtimes. In time, our Wellbeing Champions will also help lead initiatives such as kindness challenges, wellbeing days and pupil voice activities; making sure that everyone feels heard and respected. With these young leaders at the heart of our school, Oxhey continues to flourish as a happy place to learn and grow!



Oxhey First School,
Pennine Way,
Biddulph,
Stoke-on-Trent
ST8 7EB
oxhey.staffs.sch.uk



THE REGINALD MITCHELL PRIMARY SCHOOL NEWS

Super Spitfires Lead the Way in Anti-Bullying!

Our **Super Spitfires**, who lead on anti-bullying across school, have continued to make a fantastic impact this term. Earlier in the year, they delivered an assembly to raise their profile and ensure all pupils understood their important role in promoting positive play and kind friendships. Most recently, the team have worked together to create a **child-friendly anti-bullying policy** using the 'STOP' acronym, which has now been developed into a pupil-designed poster. This will be shared with all children in an upcoming assembly, with copies also going home to reinforce the message. The Super Spitfires have shown real leadership and maturity, even sharing their brilliant work with the Trust Directors, who were incredibly impressed with their contribution to creating a safe and supportive environment for all.



The Reginald Mitchell
Primary School,
Congleton Road,
Stoke-on-Trent
ST7 1NA
reginaldmitchell.co.uk



CASTLECHURCH PRIMARY SCHOOL NEWS



At Castlechurch, we are proud of our comprehensive personal development offer and are committed to ensuring that all pupils have the opportunity to develop the skills and knowledge they need to prepare them for life beyond primary school. This term, pupils have benefited from a wide range of enriching experiences that extend learning beyond the classroom, including curriculum enrichment, cultural and sporting activities, wellbeing support, community engagement and outdoor learning. They have also developed leadership skills through democratically elected roles such as School Council, the Eco Team and Friendship Champions. These opportunities strengthen pupils' confidence, resilience and character while contributing positively to our wider school community.

This term, the Castlechurch School Choir proudly represented our school at the Stafford Gotta Sing! event at the Gatehouse Theatre. It was a fantastic opportunity for our pupils, who performed confidently on a professional stage in front of a live audience.

School staff, parents and carers were incredibly proud of the children's achievements and felt privileged to share such a special experience with them.

Well done, Castlechurch Choir—you were amazing!



Castlechurch Primary School,
Tennyson Road,
Stafford,
ST17 9SY

castlechurchprimary.co.uk



SPRINGHEAD PRIMARY SCHOOL NEWS



NEW NURTURE ROOM A RESOUNDING SUCCESS!

We are delighted to share the launch of our brand-new Nurture Room and expanded ELSA (Emotional Literacy Support Assistant) provision, led by the wonderful Ms Bromage. This dedicated space has already become a calm, welcoming environment where pupils who require additional social, emotional and mental health support can take time to regulate, reflect and build the skills they need to thrive both in and out of the classroom. Since opening this term, children from across the school have benefited from small-group sessions, one-to-one support and targeted activities designed to boost confidence, resilience and emotional wellbeing. We have already seen the positive impact this provision is having, with pupils speaking proudly about how the space helps them feel settled, supported and ready to learn.

A big THANK YOU must go to our PTFA, whose generous donation made the creation of this space possible. Their contribution has enabled us to furnish the room with high-quality resources, sensory tools and comfortable areas for pupils to access whenever they need support. We are extremely grateful for their ongoing commitment to enhancing the school experience for all of our children.

We look forward to sharing more updates as the Nurture Room and ELSA provision continues to grow and support our pupils across the year.

Springhead Primary School
Kingsley Road,
Talke Pits,
Stoke-on-Trent
ST7 1RA
springhead.staffs.sch.uk





Our incredible House Captains have been leading with energy, creativity, and confidence all year and we would like to celebrate everything they've accomplished!

Weekly House Point Leaders - Every week, our House Captains take charge of counting up house points and proudly announcing the winning house during assembly. They've carved out their own section in the assembly, confidently presenting results in front of the whole school; a brilliant showcase of leadership and public speaking.

House Redesign and cup competition – This year, the Captains led a full rebranding of our house system. They launched a badge design competition that sparked new house names and identities: Dynamic Dragons, Grizzly Bears, Fantastic Foxes. Now, they're working with a local artist to create brand-new logos that reflect these exciting new themes.

Playground Leaders

Our House Captains have also completed Playground Leader training. They now help guide play at lunchtime, especially supporting younger children, and have played a key role in launching new playground zones.

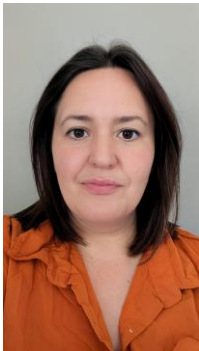
Sponsored walk

Looking ahead to summer, the Captains are planning a sponsored walk to "Climb the Cloud", a local landmark, to raise money for charity. It's a fantastic initiative that blends fitness, community spirit and social impact.

Easter Decorate an Egg event

The Captains have just launched a Decorate an Egg competition for Easter. They've created posters, promoted the event in assembly, and are gearing up for a colourful celebration of creativity.

Marlfields Primary School
Waggs Road,
Congleton,
Cheshire
CW12 4BT

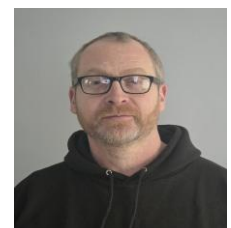


Introducing the new CFLP Attendance Officer (Maternity Cover)

Hello everyone, my name is Jennifer Garratt and I'm excited to introduce myself as the new Attendance Officer at the Children's First Learning Partnership. I will be covering the maternity leave of the current attendance officer Rebecca Farrington, who leaves at Easter to have her baby. I'm really looking forward to working with our pupils, families, and staff to help every child achieve excellent attendance and reach their full potential. I'll be here to offer support, answer any questions, and work with families to overcome any barriers to regular attendance. Together, we can ensure that every school day counts! If you ever need advice or support regarding attendance, please don't hesitate to get in touch via your school office or on j.garratt@cflptrust.co.uk. My working days are Monday, Tuesday and Wednesday morning's during the Summer Term.

Say 'Hello' to the new CFLP Central Site Technician

We're pleased to introduce **Scott Reynolds**, our Central CFLP Site Technician. Scott joined us in **January 2026** and brings a wealth of experience built up over many years working in site and facilities roles. He has also previously worked in another local school, giving him a strong understanding of the day-to-day needs of a busy school environment. We're delighted to have Scott on board supporting the CFLP school sites.



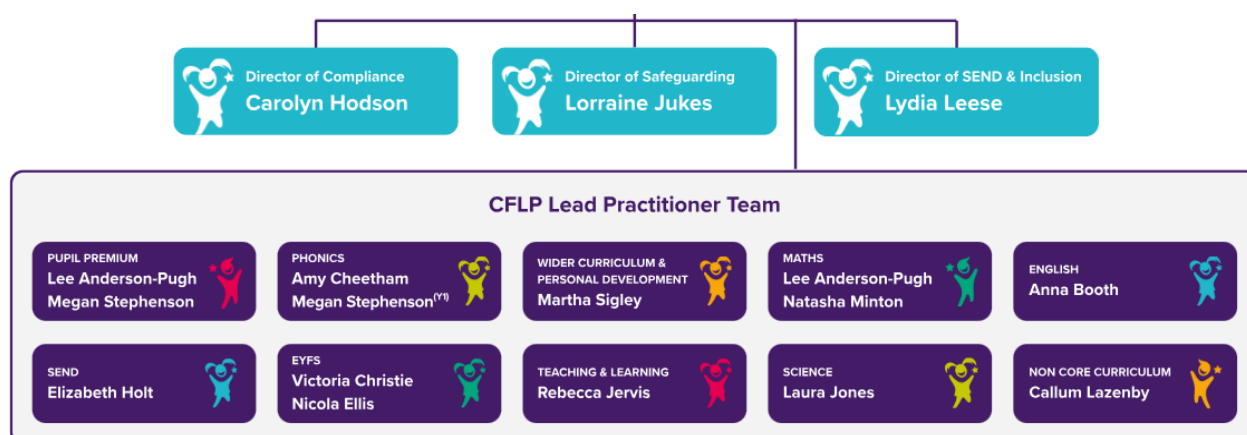
Moving forwards in a digital society - Digital Marketing Apprentice

We're pleased to introduce **Lillie Moul-Wood**, our Digital Marketing Apprentice. Lillie works for the Children First Learning Partnership while receiving training and mentorship from **Hurrah Marketing**, our digital marketing partner. She is helping to enhance all things social media and website-related, supporting the development of our online presence and digital communications.



hurrah!

Lead Practitioners: Strengthening support across our trust and beyond!



At the Children First Learning Partnership, we are proud to share the success of our **Lead Practitioner programme**, which plays a vital role in supporting the provision of high-quality teaching and learning across all our schools, whilst also supporting our succession planning and talent spotting programme. These highly skilled professionals are deployed throughout the trust and across Staffordshire to strengthen practice, champion collaboration, and ensure every child receives the very best educational experience

Each Lead Practitioner brings **specialist expertise** within a particular subject area or phase. Whether their focus is English, Maths, early reading, SEND, EYFS, enrichment, or wider curriculum development, they are selected for their exceptional knowledge, proven impact in the classroom, and ability to inspire others.

What They Do

- Lead **trust-wide forums** and professional networks
- Support curriculum development and subject leadership
- Offer guidance to staff and families where specialist knowledge is helpful
- Help ensure consistency and excellence across all schools

Our Lead Practitioners are a vital part of our trust's commitment to excellence. Their enthusiasm, expertise, and dedication help us maintain the highest standards and continue to place children's learning at the heart of everything we do

'INSPIRING EXCELLENCE TOGETHER'

News Gallery – A look back across the Spring Term!



01782 973810 | centraloffice@cflptrust.co.uk | [X @ChildrenFirstLP](https://www.instagram.com/ChildrenFirstLP)
Knypersley First School, Newpool Road, Knypersley, Stoke-on-Trent ST8 6NN

Children First Learning Partnership is a charitable company limited by guarantee, registered in England and Wales.
Company number: 11716066. Registered address: Knypersley First School, Newpool Road, Knypersley, Stoke-on-Trent, England ST8 6NN.